

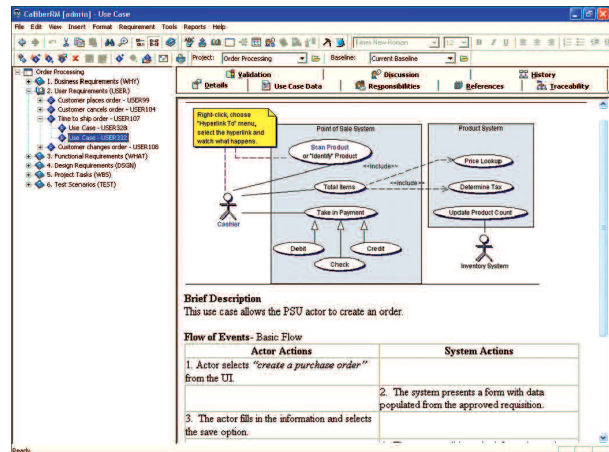


# Borland® CaliberRM™ 2005

## Collaborative Requirements Management System

DELIVER PROJECTS RIGHT—THE FIRST TIME

Borland® CaliberRM™ 2005 is an enterprise requirements management system designed to facilitate collaboration, impact analysis, and communication in the definition and management of changing requirements. CaliberRM helps organizations – large, small, or distributed - effectively manage expectations across the lifecycle so that projects are delivered on time, within scope, and according to specification. Designed for ease of use, the intuitive interface and powerful decision support capabilities of CaliberRM help teams deliver on key project milestones with greater accuracy and predictability. CaliberRM also helps applications meet end-user needs by allowing all project stakeholders — marketing teams, analysts, developers, testers, and managers — to collaborate and communicate the voice of the customer throughout the lifecycle.



The Borland CaliberRM user interface features a requirement tree on the left side and tabs containing requirements data on the right. The Microsoft® Windows® and Web clients have the same interface, so users can work with either at the same level of productivity.

### FEATURES AND BENEFITS

#### CENTRALIZED REPOSITORY

Borland CaliberRM provides a central, secure repository for project requirements. By storing requirements in a common repository, the most current data is available to the people who need it, whenever they need it. Requirements are given visibility so that errors are detected earlier in the application development lifecycle. CaliberRM provides collaboration opportunities to more of your team members, helping to improve project quality.

#### ADAPTABLE TO FIT YOUR PROCESSES

CaliberRM is designed to bring speed and agility to the requirements process. Whether your process is highly structured or very agile, CaliberRM can be customized to support the way your teams work. It is easily customized directly through the GUI or by using helpful wizards; complex and/or proprietary scripting languages are not required. As your process evolves, CaliberRM can be easily modified to keep pace.

#### REQUIREMENTS TRACEABILITY ACROSS THE LIFECYCLE

CaliberRM has an open architecture that permits requirements to be linked to a variety of artifacts across the lifecycle. Whether it be a source code file or change request managed in Borland® StarTeam®, a test case or test set managed in Mercury interactive

TestDirector®, or a task from Microsoft® Project, CaliberRM can link requirements to the appropriate artifacts. Tracing requirements to lifecycle artifacts improves team productivity through accurate and timely impact analysis, change notification, and compliance reporting. For other tools and custom applications, CaliberRM integrations can be easily written for Java™ COM, and the Microsoft .NET Framework.

#### IMPACT ANALYSIS THROUGHOUT THE APPLICATION LIFECYCLE

Multiple methods of traceability visualization help users immediately understand the scope of analysis required to gauge the effect of a requirements change. Traces are easily created using drag and drop and can link assets in multiple systems. Whether the change affects other requirements, tests, tasks and/or source code, CaliberRM shows the information in real time. No import/export is required.

#### ONLINE GLOSSARIES TO STANDARDIZE AND DEFINE TERMINOLOGY

Glossaries are useful to define industry terms, project references, corporate language, etc., to help ensure that team members look at requirements the same way. Glossaries can also be used to define ambiguous and untestable terms — words that don't belong in requirements. CaliberRM helps to refine requirements on the way in, so they don't become costly defects in later stages.

## Borland® CaliberRM™ 2005

### IMPROVE COLLABORATION

CaliberRM provides an enterprise repository that delivers simultaneous, secure, and live requirements data for all projects. Enjoy using the flexibility of rich-text formatting and embedded images and tables to express requirements in a way that makes the most sense for your organization.

### EXPAND YOUR VISION WITH DATAMART

CaliberRM Datamart is a powerful business intelligence solution that provides managers with dashboard-style reporting to measure, track, and analyze the efficiency and effectiveness of the requirements management process.

### MAKE MORE ACCURATE PREDICTIONS

CaliberRM ESTIMATE Professional includes powerful requirements-based estimation capabilities that help project managers plan project scope, schedule, and resources throughout the software development lifecycle with greater accuracy.

### ACCESS REQUIREMENTS FROM ANYWHERE

CaliberRM clients are architected to communicate efficiently via TCP/IP giving team members quick access to live requirements data from virtually anywhere, even with low bandwidth connections.

### REDUCE LEARNING CURVES WITH EASY-TO-USE GUI

CaliberRM makes it easier for stakeholders from many backgrounds to collaborate — increasing the amount of usable knowledge available for developers. In the event of staff turnover, CaliberRM makes it easier for new employees to get up to speed quickly, helping to reduce risks to the project schedule.

### RECEIVE NOTIFICATION OF IMPORTANT CHANGES

Immediate notification tied to changes of project requirements means responsible users won't be surprised by changes that are not evident until later in the development cycle.

### FOCUS ON WHAT'S IMPORTANT

Prioritize requirements by sorting and filtering on cost, priority, or other key attributes within the spreadsheet views. Views can be created based on data collected to make the management of requirements easier.

### VIEW COMPREHENSIVE AUDIT TRAIL AND CHANGE HISTORY

Every change in CaliberRM is automatically audited. Each change creates a unique history record, highlighting the differences between one version of a requirement and another, including the reason for the change.

### LEVERAGING BASELINING TO MEASURE VOLATILITY

Since CaliberRM captures versions of each requirement, it also enables baselining - the versioning of a whole set of requirements with each requirement at its specific version. This baseline provides the capability to both electronically sign and view a snapshot of requirements at a point in time. By comparing baselines in a handy side-by-side report, users can immediately see where volatility, modifications, additions, and deletions have taken place.

### SYSTEM REQUIREMENTS

#### BORLAND CALIBERRM SERVER

- Intel® Pentium® II/300 MHz (Pentium III/500 MHz or higher recommended)
- 256 MB RAM (1 GB recommended)
- Microsoft® Windows® 2003 Server (SP1) or Microsoft® Windows® 2000 Server (SP4)
- Network connection
- 250 MB hard disk space for server and database (560 MB recommended)

#### BORLAND CALIBERRM WINDOWS CLIENT AND WEB CLIENT

- 200 MHz Pentium II (500 MHz Pentium II or higher)
- 128 MB RAM (256 MB recommended)
- Windows 2003 (SP1, 32-bit version only), Windows 2000 Professional (SP4), Windows XP Professional (SP2) workstation
- Microsoft Internet Explorer® 6.0 or higher
- Network connection

- 100 MB hard disk space (for applications)
- Office Products: MS Access, MS Word, MS Excel 2002 or 2003

#### BORLAND CALIBERRM DATAMART

- Windows 2000

Note: CaliberRM Web Server only needs to meet the recommended system requirements that Apache or IIS requires.

### ABOUT BORLAND

Borland Software Corporation is the global leader in platform independent solutions for Software Delivery Optimization™. The company provides the software and services that align the people, process, and technology required to maximize the business value of software.



[www.borland.com](http://www.borland.com)

Copyright © 2005 Borland Software Corporation. All rights reserved. All Borland brand and product names are service marks, trademarks or registered trademarks of Borland Software Corporation in the United States and other countries. All other marks are the property of their respective owners. 23801